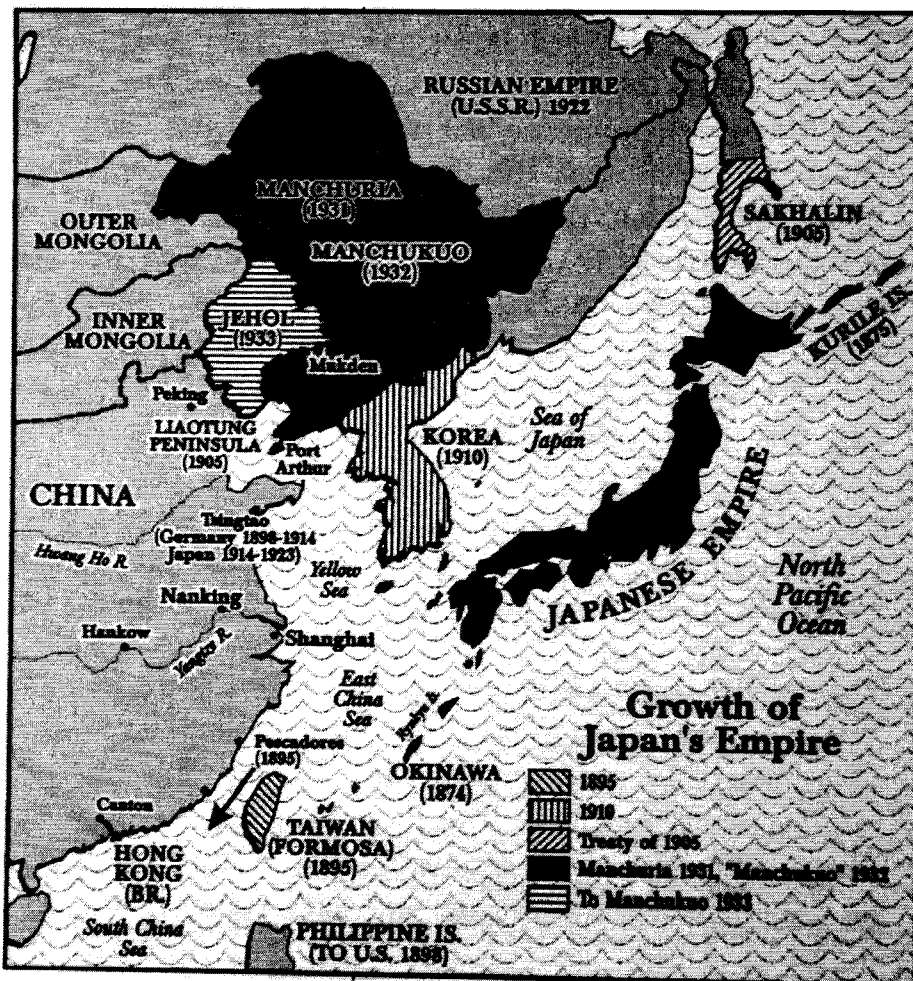


The Invasion of China

- ▶ The Emperor of China (whose government was no longer in control of the country) was deposed in 1911, throwing the country into 40 years of internal struggle and civil war.
- ▶ Warlords quickly took over sections of the country and ruled them as individual "kingdoms." By 1928 two major parties – the Communists (led by Mao Zedong) and the Kuomintang (led by General Chiang)- were engaged in open civil warfare for control of the country. From 1930 to 1934 the Kuomintang tried repeatedly to encircle Mao Zedong and his Communists.
- ▶ Seeing China embroiled in internal strife, Japan decided to advance on Manchuria in 1931. They easily conquered the province, installed Emperor Pu-Yi, renaming the region Manchukuo.



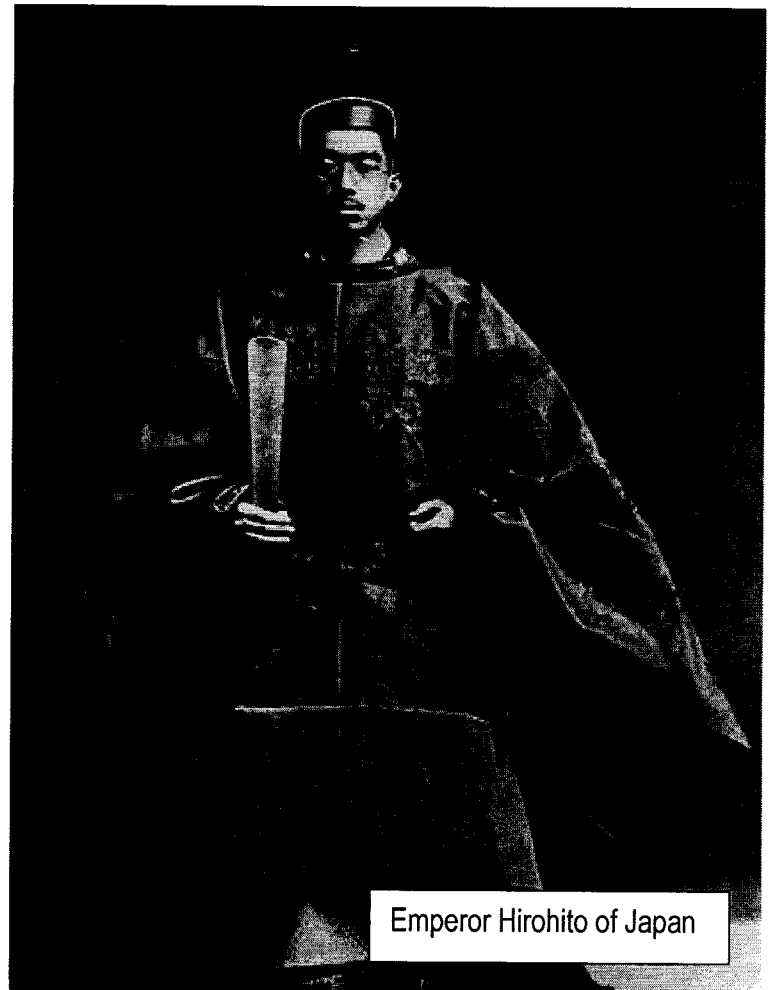
- ▶ With the Chinese having no time to prepare, the Japanese attacked on July 7, 1937, falsifying an attack against them by the Chinese. Japanese troops and warships poured into China, attempting to occupy the five Western provinces and create another state like Manchukuo.
- ▶ They occupied Peking and Shanghai. In December 1937 they took Nanjing (aka Nanking), the Kuomintang capital. Crowded with refugees, the Nationalists abandoned Nanjing to its fate at the hands of the Japanese. Over a period of six weeks, hundreds of thousands of Chinese were killed, women were raped, and the city sacked in what became known as the "Rape of Nanjing."

- ▶ By 1939, as war started in Europe, China had been fighting a forgotten war for eight years. There were more than 2,000,000 Chinese casualties, widespread disease and famine. The Japanese declared China conquered, but the reality was that neither side could gain an upper hand. Chiang distrusted the Communists, and sent his army against them as often as he attacked the Japanese.

What should you get out of this note?

China:

Japan:



Emperor Hirohito of Japan