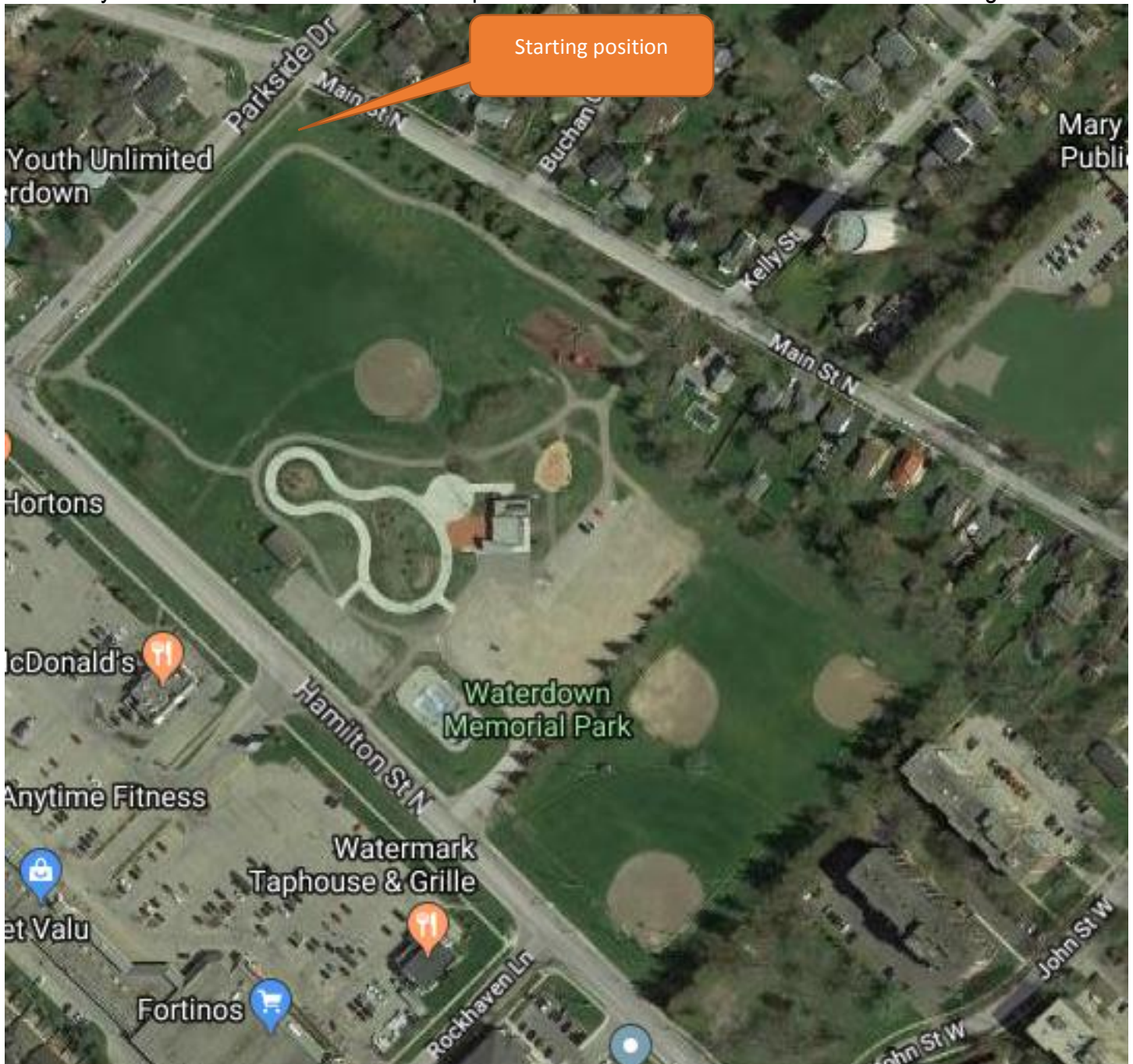


Invading Memorial Park using snowballs

You and your table friends need to devise a plan to invade Memorial Park in Waterdown using snowballs.



Some things to keep in mind:

- There are more people in Memorial park than people in your group (the ratio is around 20:1).
- You have unlimited snowballs (they are magic).
- If you make it to the building in the centre of the park you gain control of the park.
- You can only enter the park from the entrance identified above.